

Figure 1. Craniosacral System (CSS) membrane layers.

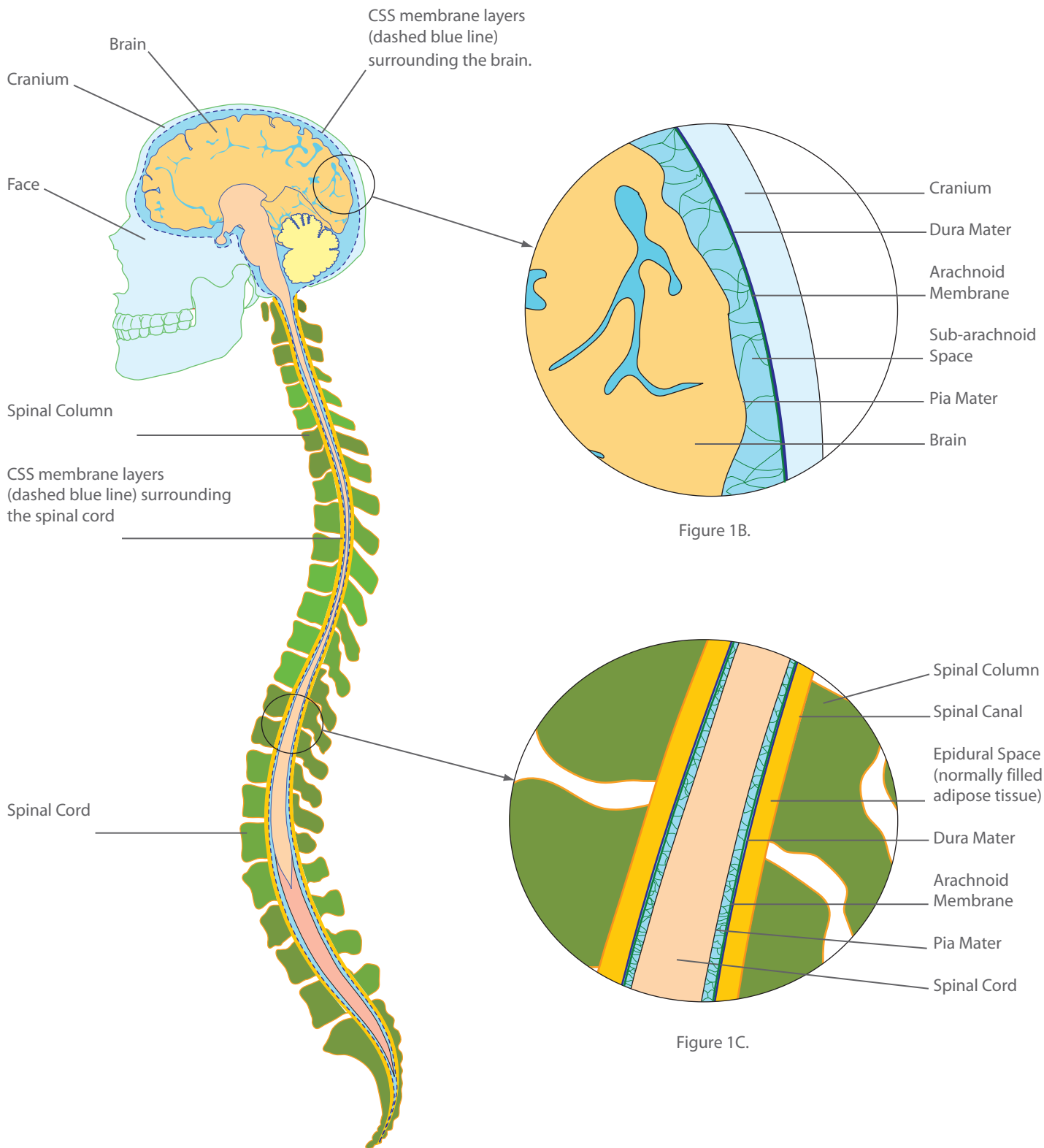


Figure 1A.

Figure 1A. Mid-Sagittal Section showing the CSS membrane layers as a dashed blue line surrounding the brain and spinal cord. The cranium, face and spinal column are also shown.

Figure 1B. Enlarged section showing the CSS membrane layers surrounding the brain. The pia mater is in direct contact with the brain tissue. It is encased by the arachnoid membrane that has thin filaments, called arachnoid trabeculae, spanning the space between the arachnoid membrane and the pia mater. This space is called the sub-arachnoid space in which flows cerebrospinal fluid. The arachnoid membrane is surrounded by the dura mater. The dura mater forms the inner layer of the cranial bones, called periosteum.

Figure 1C. Enlarged section showing the CSS membrane layers surrounding the spinal cord. There is a space, called the epidural space, between the dura mater and the bone of the spinal column that forms the spinal canal. The epidural space is normally filled with specialized adipose tissue.